

National Line Card | Canada

Products & Systems Solutions



Approach

Our goal is to deliver the outcomes that matter most to you—from more comfortable indoor environments to energy efficient operations. We take a consultative approach to understand your unique business objectives, gather data and information to make informed recommendations, and support you from implementation to validation.

Service & Solutions

Our capabilities include commercial systems, energy services & solutions, contracting, controls/building automation, rentals and service.



Building Services

Help reduce operating costs and extend the life of your equipment with planned, reliable, preventative and proactive scheduled maintenance and repair by Trane factory trained technicians.

- Service Agreements
 - Connected Mechanical Service Agreements
- Extended Warranty
- Quoted Repair Products



Digital Services

Leverage your data and Trane's analytics to create simple dashboards that can help you to understand performance of your building and its assets. Dashboards can help to find opportunities for increasing efficiency, decreasing energy use, and increasing productivity through system optimization.

- Connected Building Service Agreements
- Secure remote access and building management with TraneConnect™
- Trane® Autonomous Control



Intelligent Services

Trane Intelligent Services provides one-on-one consultative support to reduce energy use, manage operational costs, and optimize building performance. Take the guesswork out of understanding building data to achieve more comfortable spaces while meeting your financial and environmental goals.



Rental Services

24/7/365 local service, engineering expertise and an expansive fleet of rental products. Promptly provides temporary, scalable HVAC and power from standard applications to complex solutions

- Water-Cooled Chillers, Air-Cooled Chillers, Temporary Power, Cooling Towers, Packaged A/C Units, Air Handlers, Portable A/C Units



IAQ Services

Today there are more ways than ever to assess and manage indoor air quality, while keeping your goals for cost and sustainability in sight. Trane offers a variety of services, innovative technologies, and proven solutions for measuring and monitoring IAQ. We can help you align with air quality guidelines and recommendations set by the CDC, EPA, and ASHRAE.



Trane Creative Solutions

Customized Trane Equipment Modifications Including: Multizone Replacements, Water-Side Economizer Coils for Air-Cooled Chillers, Packaged Air-Cooled Ice Storage Systems, Acoustical Attenuation



Engineer and Contractor Resources

Trane is here to support, enable and educate Engineers and Contractors through comprehensive tools and resources, design and analysis tools, professional education and training, BIM and CAD drawings, and pre-engineered system solutions.

traneengineer.com | tranecontractors.com



Engineered Systems

- Comprehensive Chilled Water Systems
- Comprehensive Chiller- Heater Systems
- CoolSense® Integrated Outdoor Systems
- Geothermal Systems
- Intelligent Variable Air Systems
- Thermal Battery™ Systems
- Zoned Rooftop Systems



Energy Services

Trane enables more efficient, sustainable buildings by providing a single source for decarbonization and modernization solutions, programmatic implementation services, and financing and funding options. We use deep expertise and a data driven approach to understand how energy impacts your unique situation, and collaborate to develop strategies to deliver your goals for carbon reduction, resiliency, and energy optimization.

Energy Solutions include:

Building modernization and automation | Lighting | Water Conservation | Renewables and Distributed Energy Resources | Funding, financing, and procurement programs

Trane is accredited by NAESCO as an Energy Services Provider (ESP), a U.S. DOE-qualified Energy Services Company (ESCO), and recognized by the Canadian Federal Buildings Initiative as a qualified bidder.

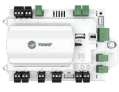
Building Automation



Tracer® SC+
Scalable building automation system solution with standard, open protocols



Pivot® Smart Thermostat
Wi-Fi & Ethernet thermostat for light commercial applications



Symbio®
Application Specific and Programmable Unit Controllers, Integrates with BACnet MSTP, BACnet/IP, BACnet/Zigbee, Lontalk & Modbus Protocols



Air-Fi® Zone Sensors
Flexible and reliable wireless sensors & system communications leveraging Air-Fi® Wireless (BACnet/Zigbee) technology. Sensors include temperature, humidity, CO₂ & occupancy

Building Management Systems



Tracer® Ensemble®
Enterprise level building management software for facility professionals



Tracer® Synchrony®
Tracer SC+'s built-in web based user interface software for building operators



Tracer® Concierge®
Light commercial control system with set-up wizard for installers and simple user interface for non-technical users



BAS Operator and Occupant Apps
Providing mobile access to service providers, building operators, and occupants



Trane® Autonomous Control
AI-based solution that performs automatic system optimization using real-time weather data and predictions, building occupancy trends & energy usage patterns

IAQ Solutions



Synexis
Best in class air purification and surface cleanliness by creating Dry Hydrogen Peroxide from naturally occurring oxygen and humidity in the air to significantly reduce many different pathogens.



TCACS
Trane Catalytic Air Cleaning System (TCACS) is an enhanced air filter containing 3 technologies: filtration, ultraviolet light, and a photocatalytic oxidation (PCO) process

Data Center Cooling



Performance Climate Changer® for Data Centers
Maintains tight temperature and humidity tolerances for server room environments.

Water-Cooled Centrifugal Chillers



Model TACW
Oil-free; Cooling operation; 100-250 Tons; 400-600 Tons. R-134a and R-513A



Agility® Model HDWA
175 - 425 Tons; Heating and Cooling capable; Up to 140°F HW; 60 Hz, 50 Hz; Symbio® 800 controller; R-513A



CenTraVac® Model CVHE
3-Stage Compressor; Heating and Cooling capable; Free Cooling; Symbio® 800 controller; 200 - 500 Tons; R-514A



CenTraVac® Model CVHF
2-Stage Compressor; Heating and Cooling capable; Free Cooling; Heat recovery operation; Symbio® 800 controller; 325 - 2000 Tons; R-514A



CenTraVac® Model CVHH
Multi-stage compressor; Heating and Cooling capable; Free Cooling; Heat recovery operation, Symbio® 800 controller; 900 - 2000 Tons; R-1233zd



CenTraVac® Model CDHF
Multi-Stage Dual Compressor; Heating and Cooling capable; Free Cooling; Symbio® 800 controller; 1450 - 3950 Tons; R-514A



CenTraVac® Model CDHH
Multi-stage; Dual Compressor; Heating and Cooling capable; Free Cooling; Symbio® 800 controller; 1800 - 4000 Tons; R-1233zd

Water-Cooled Chillers



Cold Generator™ Model CGWR
Scroll Compressors; 20 - 75 Tons; R-410A



Series R® Model RTWD
Helical Rotary Compressor; Heating and Cooling capable; Heat recovery operation—dual setpoint; Up to 165°F HW production; Symbio® 800 controller; 80 - 250 Tons; R-513A and R-515B



Series R® Model RTHD
Optional Variable Speed Helical Rotary Compressor; Heating and Cooling Capable; Symbio® 800 controller; 175 - 400 tons; R-513A

Air-Cooled Chillers



Ascend® Air-to-Water Heat Pump Model ACX
Energy efficient, all electric heating and cooling; Symbio® 800 controller; 140-230 tons cooling; 1500 - 2500 MBh heating; R-454B



Ascend® Model ACS
Scroll Compressor; 140 - 230 Tons; R-454B; Heat recovery; Symbio® 800 controller



Ascend® Model ACR
Variable Speed Helical Rotary Compressor; Free Cooling; Symbio® 800 controller; 150 - 550 Tons; R-513A



Model CGAM
Scroll Compressor; 20 - 130 Tons; R-454B; Heat recovery option; Symbio® 800 controller



Model TCAA
Oil Free Centrifugal; 60 - 440 Tons; R-513A



Sintesis® Model RTAF
Variable Speed Helical Rotary Compressor; 115 - 500 Tons; R-513A; Symbio® 800 controller



Cold Generator™ Model CCAR
Scroll Compressor with Air-Cooled Condenser; 20 - 70 Tons

Industrial Process Cooling



TAEvo TECH
Air-cooled process chiller; Indoor and outdoor use; 1-50 Tons; R-410a



ARIES TECH2
Air-cooled process chiller; Outdoor use; 60-200 Tons; R-410a

Modular Units



Thermafit® Model AMC
Air-Cooled Chiller; Optional Free-Cooling, Heat Recovery Up to 140°F (60°C); 15-80T Modules (1 - 12 Modules per Bank); R-454B



Thermafit® Model MWC
Water-Cooled Chiller; Optional Heat Recovery Up to 180°F*; 15-80T Modules (1 - 12 Modules per Bank); R-454B; R-513*



Thermafit® Model MAR
Split Chiller with Remote
Condenser; 15-80T Modules (1 -
12 Modules per Bank); R-454B



Thermafit® Model AXM
Air-to-Water Heat Pump
Vapor Injection Compressors; Up
to 140°F (60°C) 30T Modules; 374
MBH (2 - 12 Modules per Bank);
R-454B



Thermafit® Model WXM
Water-to-Water Heat Pump; Up
to 140°F (60°C) 20-80T Modules;
262-1033 MBH (1 - 12 Modules
per Bank); R-454B



Thermafit® Model MWS
Water-Source Multi-pipe; Up to
140°F (60°C) 30-60T Modules;
432-942 MBH (3 - 10 Modules
per Bank); R-454B



Thermafit® Model MAS
Air-Source Multi-pipe; Vapor
Injection Compressors; Up to
140°F (60°C); 30T Modules; 433
MBH (3 - 10 Modules per Bank);
R-454B



Thermafit® Model TACW
Water-cooled chiller; Oil-free
centrifugal; 60 - 135 Tons (1000
Ton Banks); R-513A



Cold Generator® Model CICD
Water-cooled; Heat Recovery;
20 - 85 Ton (600 ton Arrays)

Thermal Storage



**Thermal Energy
Storage Tanks**
Helps manage peak electric
demand for buildings with chilled
water heating and cooling systems
above 100 tons. Optimizes energy
usage and lowers operating
costs by storing and leveraging
renewable, excess, or
inexpensive energy.



**Thermal Battery™
Air-Cooled Chiller Plant**
Pre-Engineered, Factory Built
Cooling System. Incl: Air-Cooled
Chillers, CALMAC® Energy Storage
Tanks, Customizable System



**Thermal Battery™ Storage-
Source Heat Pump System**
Delivers Heating and Cooling,
Supports Electrification. Incl:
Water-to-Water and Air-to-Water
Heat Pumps, CALMAC® Energy
Storage Tanks, Trane Controls

Packaged Units



Impack®
Cooling, Gas/Electric, Heat Pump
& Dual I-Fuel; Multiple Efficiency
Levels; Up to 16 SEER; (1 ph-15
SEER2); 2 - 5 Tons



Foundation®
Cooling, Gas/Electric; Adapts
to Competitors Roof Curbs;
3 - 25 Tons



**Precedent® &
Precedent® with eFlex™**
3 - 25 Tons; Cooling, Gas, Electric,
Heat Pump & Hybrid Dual Fuel;
Standard, High, & eFlex Ultra-High
Efficiency (up to 25.4 IEER); Symbio
700 control with Mobile App
and Air-Fi® capable



Zoned Rooftop Systems
Pre-designed for small building
comfort; Includes Precedent or
Voyager rooftop unit, VAV terminal
units, Tracer® Concierge™ system
control & Air-Fi® wireless controls
& sensors; 3 - 50 Tons



Voyager® 3
Cooling, Gas/Electric; eStage™
Multi-Stage Compressors; Full &
part load efficiencies; Symbio 700
and Mobile App; Up to 17.5 IEER;
27.5 - 50 Tons



IntelliPak® 1
Cooling, Gas/Electric, Hot
Water; 20 - 130 Tons (Available
with eFlex™ Variable Speed
Compressor; 20 - 75 Tons), Symbio
800 Controller with 7" Touchscreen
Display, Air-Fi® Capable ;
up to 19 IEER



IntelliPak® 2
Cooling, Gas/Electric, Hot
Water, Air-Cooled; 90 - 150 Tons,
Available with eFlex™ Variable
Speed Compressor, Standard
Double Wall Foam, Symbio 800
Controller with 7" Touchscreen
Display, Air-Fi® Capable ;
Up to 19.3 IEER



IntelliPak® 3
Cooling, Gas/Electric; 20 - 75
Tons, Available with eFlex™
Variable Speed Compressor,
Standard Double Wall Foam,
Symbio 800 Controller with 7"
Touchscreen Display, Air-Fi®
Capable, Up to 17.8 IEER



Trane Thrive (OAXX)
Indoor Agriculture packaged
product (DX, Air and Water
Cooled); Heat Pump, Gas,
and Hot Water; 3-80 Tons

Self-Contained Units



**Water-Cooled Self-
Contained Model SWUD**
Single-piece units ideal for new
construction market; Redesigned
with upgraded features; Symbio
500 controller with TD7; R-454B;
Up to 22.8 IEER; 20-110 Tons



**Modular Self-
Contained System**
Smallest Footprint on the Market;
Water-Cooled System; Variable
speed compressors and fans;
Industry-leading Part Load
Efficiency - Up to 20.8 IEER;
25 - 80 Tons, cassette
construction

Water-Source Heat Pumps



**Axiom™ Standard
Efficiency Model GEH/GEV**
Horizontal (0.5 - 15T) or vertical
(0.5 - 25T); Deluxe sound
option for quiet operation;
Multiple airflow configurations;
0.5 - 25 Tons



**Axiom High Efficiency
Single-Stage Model EXH/EXV**
Horizontal or vertical; Deluxe
sound option for quiet operation;
Electronically Commuted
Motor (ECM); Rotary or scroll
compressor; 0.75 - 6 Tons



**Axiom High Efficiency
Two-Stage Model DXH/DXV**
Horizontal or vertical; 2-Stage
compressor; Deluxe sound option
for quiet operation; Meets LEED
EAc4 requirement; 2 - 6 Tons



**Axiom Variable Speed
Model VSH/VSV**
Horizontal or vertical; eFlex™
Variable Speed compressors
and fans; Single and three phase
voltage; 2 - 5 Tons



**Axiom High Efficiency
Console Model GEC**
ASHRAE 62 indoor air quality
compliant; Quiet operation;
0.5 - 1.5 Tons



**Axiom Vertical Stack
Model GET**
Multiple capacities & cabinet
sizes; Available in PSC or ECM
motors; Flexible air supply
options; Integrated controls;
0.75 - 3 Tons



**Axiom Water-to-Water
Model EXW**
Co-axial heat exchanger;
Rackable modular design;
5, 10, 20 Tons



**Axiom Rooftop
Models GWS & GSJ**
Boiler/Tower or Geothermal
applications; Multiple
configuration options; GWS
(3-10 Tons); GSJ with Symbio
700 controls (12.5 - 25 Tons)

Air Handling Units



**Performance Climate
Changer® - Catalog**
Dependable performance at an
uncompromising value; Compact
Footprint; Factory-Engineered,
Mounted & Tested Controls;
Indoor/Outdoor; Up to 15000
CFM; 2" R-13 Construction

Performance Climate Changer® - Semi-custom (CSAA/PSCA)



Leading Efficiency and Casing Performance: Dimensional Flexibility enabling Easy Installation: Indoor/Outdoor; Up to 60000 CFM; up to +/-10 in w.g.; 2", R-13 or 3", R-19 Construction; Factory Engineered, Mounted & Tested Controls

Performance Climate Changer – Custom (TCFS/TCPA)



Now available in side-by-side configurations; Indoor or outdoor; Unlimited dimensional flexibility and airflow; Up to +/- 12 in. w.g. operating pressure, with <1/2% air leakage rate; Absolute thermal barrier with performance up to R-25

Trane Air Rotation Unit



Indoor or Outdoor; Up to 300 tons and 120,000+ CFM; CW or DX; 2" Foam Insulated panels, factory engineered & mounted controls

Make-Up Air Gas Heating Units



Model GSAA

Indoor Gas-Fired Make-Up Air Handlers; Standard & High Efficiency; 100 - 1200 MBH



Model GRAA

Outdoor Gas-Fired Make-Up Air Handlers; 100 - 1200 MBH



Model AHAA

Packaged Air Handlers; Cooling, Make-Up Air, & Ventilation

Unit Heaters



Gas Fired Unit Heaters

14 sizes, from 30 to 400 MBh; 409 stainless steel; Single point power; Direct Spark ignition; Tubular heat exchangers; OSHA fan guard



Electric Unit Heaters

Model UHWA/UHAA/UHRA/UHXA/UHEC/UHCA

7 styles, over 200 configurations; Sized from 1.5 to 50 kW; Capacities from 5 to 16.4 MBh; Vertical or horizontal discharge; Single point power; UL Listed

Hydronic Unit Heaters Model UHS/UHP



38 unit sizes from 8 to 720 MBh; Vertical and horizontal configurations; 2-point or 4-point installation; Single point power: Steam or hot water; OSHA fan guard; ETL/ETLc certified

High Efficiency Gas Fired Unit Heater Model HINA/HIPA



6 sizes: 50-400MBH, natural and LP gas. 3:1 self-modulating turndown; >95% Efficiency

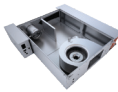
Terminal Units

Blower Coil



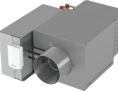
Blower Coil Model BCXE; Indoor; Up to 4000 CFM; Horizontal and Vertical Configurations; ECM Motors, Multiple Filter Options, Factory-Engineered & Mounted Controls

CoolSense® Terminal Unit



Up to 1300 CFM; Variable speed ECM; Symbio® 500 controller (available with Air-Fi wireless)

VariTrane® Model VC*F



Single Duct Variable Air Volume Boxes; 25 - 8000 CFM; Optional Factory Installed Piping Package

VariTrane® Model VDDF



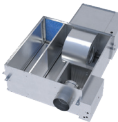
Dual Duct Variable Air Volume Boxes; 80 - 8000 CFM

VariTrane® Model VP*F



Parallel Configuration Fan-Powered Variable Air Volume Boxes; 200 - 2200 CFM

VariTrane® Model VS*G



Series Configuration Fan-Powered Variable Air Volume Boxes; 200 - 2500 CFM; optional integral suppressor attenuator available

VariTrane® Model LF**



Low Height Fan-Powered Variable Air Volume Boxes; 100 - 1800 CFM; Parallel or Series Configuration

VariTrane® Model VRRF



Round Inlet/Round Outlet RetroFit Variable Air Volume Boxes; 25 - 4000 CFM

UniTrane® Model FC*B



Horizontal or Vertical Fan Coil; Cabinet, Recessed or Compact Configurations; 200 - 1200 CFM

Force-Flo™ Model FF*B



Horizontal or Vertical Cabinet Heater; Concealed or Recessed Configurations; 200 - 1200 CFM

Model VUVE



Vertical Unit Ventilators; 750 - 1500 CFM

Model HUVG



Horizontal Unit Ventilators; 750 - 2000 CFM

Split Systems



Split Systems

Cooling & Heat Pump; Gas, Electric, or Hot Water Heat; 1.5 - 5 Tons



Odyssey™

Symbio® 700 controller; Full & part load efficiencies; Up to 14.8 IEER; 6 - 25 Tons



RAUJ

Air-Cooled Condensing Units; Available with Remote Chiller Evaporators; 20 - 120 Tons



CAUJ

Air-Cooled Condensers; 20 - 120 Tons

Outdoor Air Solutions



Horizon® DOAS (OAXX)

DOAS; Packaged product (DX, Air and Water Cooled); Heat Pump, Gas, and Hot Water; >43°F Dew Point capability; ERV; AHRI 920 rated; 3-80 Tons



Horizon® Flex™ (HAXX)

Up to 100% outdoor air; Packaged product (DX – Gas Heating); >51°F Dew Point capability; ERV; AHRI 340/360 certified; ASHRAE 90.1 compliant; 10 - 15 Tons

VFD



TR150/TR200

Trane Variable Frequency Drives; 6, 12, 18 Pulse



Trane – by Trane Technologies (NYSE: TT), a global climate innovator – creates comfortable, energy efficient indoor environments through a broad portfolio of heating, ventilating and air conditioning systems and controls, services, parts and supply. For more information, please visit trane.com or tranetechnologies.com.

All trademarks referenced in this document are the trademarks of their respective owners.

© 2024 Trane. All Rights Reserved.

EDU-SLB048-EN
09/06/2024