

# National Line Card

Products & Systems Solutions



## Approach

Our goal is to deliver the outcomes that matter most to you—from more comfortable indoor environments to energy efficient operations. We take a consultative approach to understand your unique business objectives, gather data and information to make informed recommendations, and support you from implementation to validation.

## Service & Solutions

Our capabilities include commercial systems, energy services & solutions, contracting, controls/building automation, rentals and service.



### Building Services

Help reduce operating costs and extend the life of your equipment with planned, reliable, preventative and proactive scheduled maintenance and repair by Trane factory trained technicians.

- Service Agreements
  - Connected Mechanical Service Agreements
- Extended Warranty
- Quoted Repair Products



### Digital Services

Leverage your data and Trane's analytics to create simple dashboards that can help you to understand performance of your building and its assets. Dashboards can help to find opportunities for increasing efficiency, decreasing energy use, and increasing productivity through system optimization.

- Connected Building Service Agreements
- Secure remote access and building management with TraneConnect™
- Trane® Autonomous Control



### Intelligent Services

Trane Intelligent Services provides one-on-one consultative support to reduce energy use, manage operational costs, and optimize building performance. Take the guesswork out of understanding building data to achieve more comfortable spaces while meeting your financial and environmental goals.



### Rental Services

24/7/365 local service, engineering expertise and an expansive fleet of rental products. Promptly provides temporary, scalable HVAC and power from standard applications to complex solutions

- Water-Cooled Chillers, Air-Cooled Chillers, Temporary Power, Cooling Towers, Packaged A/C Units, Air Handlers, Portable A/C Units



### IAQ Services

Today there are more ways than ever to assess and manage indoor air quality, while keeping your goals for cost and sustainability in sight. Trane offers a variety of services, innovative technologies, and proven solutions for measuring and monitoring IAQ. We can help you align with air quality guidelines and recommendations set by the CDC, EPA, and ASHRAE.



### Trane Creative Solutions

Customized Trane Equipment Modifications Including: Multizone Replacements, Water-Side Economizer Coils for Air-Cooled Chillers, Packaged Air-Cooled Ice Storage Systems, Acoustical Attenuation



### Engineer and Contractor Resources

Trane is here to support, enable and educate Engineers and Contractors through comprehensive tools and resources, design and analysis tools, professional education and training, BIM and CAD drawings, and pre-engineered system solutions.

[traneengineer.com](http://traneengineer.com) | [tranecontractors.com](http://tranecontractors.com)



### Engineered Systems

- Comprehensive Chilled Water Systems
- Comprehensive Chiller- Heater Systems
- CoolSense® Integrated Outdoor Systems
- Geothermal Systems
- Intelligent Variable Air Systems
- Thermal Battery™ Systems
- Variable Refrigerant Flow (VRF) Systems
- Zoned Rooftop Systems



### Energy Services

Trane enables more efficient, sustainable buildings by providing a single source for decarbonization and modernization solutions, programmatic implementation services, and financing and funding options. We use deep expertise and a data driven approach to understand how energy impacts your unique situation, and collaborate to develop strategies to deliver your goals for carbon reduction, resiliency, and energy optimization.

### Energy Solutions include:

Building modernization and automation | Lighting | Water Conservation | Renewables and Distributed Energy Resources | Funding, financing, and procurement programs

*Trane is accredited by NAESCO as an Energy Services Provider (ESP), a U.S. DOE-qualified Energy Services Company (ESCO), and recognized by the Canadian Federal Buildings Initiative as a qualified bidder.*

## Building Automation



**Tracer® SC+**  
Scalable building automation system solution with standard, open protocols



**Pivot® Smart Thermostat**  
Wi-Fi & Ethernet thermostat for light commercial applications



**Symbio®**  
Application Specific and Programmable Unit Controllers, Integrates with BACnet MSTP, BACnet/IP, BACnet/Zigbee, Lontalk & Modbus Protocols



**Air-Fi® Zone Sensors**  
Flexible and reliable wireless sensors & system communications leveraging Air-Fi® Wireless (BACnet/Zigbee) technology. Sensors include temperature, humidity, CO<sub>2</sub> & occupancy

## Building Management Systems



**Tracer® Ensemble®**  
Enterprise level building management software for facility professionals



**Tracer® Synchrony®**  
Tracer SC+'s built-in web based user interface software for building operators



**Tracer® Concierge®**  
Light commercial control system with set-up wizard for installers and simple user interface for non-technical users



**BAS Operator and Occupant Apps**  
Providing mobile access to service providers, building operators, and occupants



**Trane® Autonomous Control**  
AI-based solution that performs automatic system optimization using real-time weather data and predictions, building occupancy trends & energy usage patterns

## IAQ Solutions



**Synexis**  
Best in class air purification and surface cleanliness by creating Dry Hydrogen Peroxide from naturally occurring oxygen and humidity in the air to significantly reduce many different pathogens.



**TCACS**  
Trane Catalytic Air Cleaning System (TCACS) is an enhanced air filter containing 3 technologies: filtration, ultraviolet light, and a photocatalytic oxidation (PCO) process

## Trane® / Mitsubishi Electric VRF & Ductless



**CITY MULTI® VRF**  
Energy efficient air and water cooled, all electric VRF systems available in high efficiency, and H2i® (Hyper-Heat); 6 - 36 Tons



**HVRF**  
All electric, hybrid VRF system that uses refrigerant and water. Hybrid Branch Controller provides simultaneous heating and cooling; 6 - 36 Tons



**P & Nv Series**  
Ductless systems for superior comfort, flexibility and reliability with precise zone control to distribute heating or cooling only to spaces in use; 0.5 - 5 Tons



**SMART MULTI®**  
Light commercial multi-zone ductless heat pump system, side discharge outdoor unit; 3 - 10 Tons



**Indoor Units**  
A variety of indoor units available to meet any application and design requirements, including ceiling cassettes, wall mounted, concealed and more



**LEV Kit**  
The power to connect Trane® / Mitsubishi Electric CITY MULTI® products to Trane air handlers; allows for higher airflows, higher static pressure, larger capacity, customized products, and DOAS configurations

## Data Center Cooling



**Performance Climate Changer® for Data Centers**  
Maintains tight temperature and humidity tolerances for server room environments.

## Water-Cooled Centrifugal Chillers



**Model TACW**  
Oil-free; Cooling operation; 100-250 Tons; 400-600 Tons. R-134a and R-513A



**Agility® Model HDWA**  
175 - 425 Tons; Heating and Cooling capable; Up to 140°F HW; 60 Hz, 50 Hz; Symbio® 800 controller; R-513A



**CenTraVac® Model CVHE**  
3-Stage Compressor; Heating and Cooling capable; Free Cooling; Symbio® 800 controller; 200 - 500 Tons; R-514A



**CenTraVac® Model CVHF**  
2-Stage Compressor; Heating and Cooling capable; Free Cooling; Heat recovery operation; Symbio® 800 controller; 325 - 2000 Tons; R-514A



**CenTraVac® Model CVHH**  
Multi-stage compressor; Heating and Cooling capable; Free Cooling; Heat recovery operation; Symbio® 800 controller; 900 - 2000 Tons; R-1233zd



**CenTraVac® Model CDHF**  
Multi-Stage Dual Compressor; Heating and Cooling capable; Free Cooling; Symbio® 800 controller; 1450 - 3950 Tons; R-514A



**CenTraVac® Model CDHH**  
Multi-stage; Dual Compressor; Heating and Cooling capable; Free Cooling; Symbio® 800 controller; 1800 - 4000 Tons; R-1233zd

## Water-Cooled Chillers



**Cold Generator™ Model CGWR**  
Scroll Compressors; 20 - 75 Tons; R-410A



**Series R® Model RTWD**  
Helical Rotary Compressor; Heating and Cooling capable; Heat recovery operation—dual setpoint; Up to 165°F HW production; Symbio® 800 controller; 80 - 250 Tons; R-513A and R-515B



**Series R® Model RTHD**  
Optional Variable Speed Helical Rotary Compressor; Heating and Cooling Capable; Symbio® 800 controller; 175 - 400 tons; R-513A

## Air-Cooled Chillers



**Ascend® Air-to-Water Heat Pump Model ACX**  
Energy efficient, all electric heating and cooling; Symbio® 800 controller; 140-230 tons cooling; 1500 - 2500 MBh heating; R-454B



**Ascend® Model ACS**  
Scroll Compressor; 140 - 230 Tons; R-454B; Heat recovery; Symbio® 800 controller



**Ascend® Model ACR**  
Variable Speed Helical Rotary Compressor; Free Cooling; Symbio® 800 controller; 150 - 550 Tons; R-513A



**Model CGAM**  
Scroll Compressor; 20 - 130 Tons; R-454B; Heat recovery option; Symbio® 800 controller



**Model TCAA**  
Oil Free Centrifugal; 60 - 440 Tons; R-513A



**Sintesis® Model RTAF**  
Variable Speed Helical Rotary Compressor; 115 - 500 Tons; R-513A; Symbio® 800 controller



**Cold Generator™ Model CCAR**  
Scroll Compressor with Air-Cooled Condenser; 20 - 70 Tons

## Industrial Process Cooling



### TAEvo TECH

Air-cooled process chiller; Indoor and outdoor use; 1-50 Tons; R-410a



### ARIES TECH2

Air-cooled process chiller; Outdoor use; 60-200 Tons; R-410a

## Modular Units



### Thermafite® Model AMC

Air-Cooled Chiller; Optional Free-Cooling, Heat Recovery Up to 140°F (60°C); 15-80T Modules (1 - 12 Modules per Bank); R-454B



### Thermafite® Model MWC

Water-Cooled Chiller; Optional Heat Recovery Up to 180°F\*; 15-80T Modules (1 - 12 Modules per Bank); R-454B; R-513\*



### Thermafite® Model MAR

Split Chiller with Remote Condenser; 15-80T Modules (1 - 12 Modules per Bank); R-454B



### Thermafite® Model AXM

Air-to-Water Heat Pump Vapor Injection Compressors; Up to 140°F (60°C) 30T Modules; 374 MBH (2 - 12 Modules per Bank); R-454B



### Thermafite® Model WXM

Water-to-Water Heat Pump; Up to 140°F (60°C) 20-80T Modules; 262-1033 MBH (1 - 12 Modules per Bank); R-454B



### Thermafite® Model MWS

Water-Source Multi-pipe; Up to 140°F (60°C) 30-60T Modules; 432-942 MBH (3 - 10 Modules per Bank); R-454B



### Thermafite® Model MAS

Air-Source Multi-pipe; Vapor Injection Compressors; Up to 140°F (60°C); 30T Modules; 433 MBH (3 - 10 Modules per Bank); R-454B



### Thermafite® Model TACW

Water-cooled chiller; Oil-free centrifugal; 60 - 135 Tons (1000 Ton Banks); R-513A



### Cold Generator® Model CICD

Water-cooled; Heat Recovery; 20 - 85 Ton (600 ton Arrays)

## Thermal Storage



### Thermal Energy Storage Tanks

Helps manage peak electric demand for buildings with chilled water heating and cooling systems above 100 tons. Optimizes energy usage and lowers operating costs by storing and leveraging renewable, excess, or inexpensive energy.



### Thermal Battery™

#### Air-Cooled Chiller Plant

Pre-Engineered, Factory Built Cooling System. Incl: Air-Cooled Chillers, CALMAC® Energy Storage Tanks, Customizable System



### Thermal Battery™ Storage-Source Heat Pump System

Delivers Heating and Cooling, Supports Electrification. Incl: Water-to-Water and Air-to-Water Heat Pumps, CALMAC® Energy Storage Tanks, Trane Controls

## Packaged Units



### Impact®

Cooling, Gas/Electric, Heat Pump & Dual Fuel; Multiple Efficiency Levels; Up to 16 SEER; (1 ph-15 SEER2); 2 - 5 Tons



### Foundation®

Cooling, Gas/Electric; Adapts to Competitors Roof Curbs; 3 - 25 Tons



### Precedent® &

#### Precedent® with eFlex™

3 - 25 Tons; Cooling, Gas, Electric, Heat Pump & Hybrid Dual Fuel; Standard, High, & eFlex Ultra-High Efficiency (up to 25.4 IEER); Symbio 700 control with Mobile App and Air-Fi® capable



### Zoned Rooftop Systems

Pre-designed for small building comfort; Includes Precedent or Voyager rooftop unit, VAV terminal units, Tracer® Concierge™ system control & Air-Fi® wireless controls & sensors; 3 - 50 Tons



### Voyager® 3

Cooling, Gas/Electric; eStage™ Multi-Stage Compressors; Full & part load efficiencies; Symbio 700 and Mobile App; Up to 17.5 IEER; 27.5 - 50 Tons



### IntelliPak® 1

Cooling, Gas/Electric, Hot Water; 20 - 130 Tons (Available with eFlex™ Variable Speed Compressor; 20 - 75 Tons), Symbio 800 Controller with 7" Touchscreen Display, Air-Fi® Capable; up to 19 IEER



### IntelliPak® 2

Cooling, Gas/Electric, Hot Water, Air-Cooled; 90 - 150 Tons, Available with eFlex™ Variable Speed Compressor, Standard Double Wall Foam, Symbio 800 Controller with 7" Touchscreen Display, Air-Fi® Capable; Up to 19.3 IEER



### IntelliPak® 3

Cooling, Gas/Electric; 20 - 75 Tons, Available with eFlex™ Variable Speed Compressor, Standard Double Wall Foam, Symbio 800 Controller with 7" Touchscreen Display, Air-Fi® Capable, Up to 17.8 IEER



### Trane Thrive (OAXX)

Indoor Agriculture packaged product (DX, Air and Water Cooled); Heat Pump, Gas, and Hot Water; 3-80 Tons

## Self-Contained Units



### Water-Cooled Self-Contained Model SWUD

Single-piece units ideal for new construction market; Redesigned with upgraded features; Symbio 500 controller with TD7; R-454B; Up to 22.8 IEER; 20-110 Tons



### Modular Self-Contained System

Smallest Footprint on the Market; Water-Cooled System; Variable speed compressors and fans; Industry-leading Part Load Efficiency - Up to 20.8 IEER; 25 - 80 Tons, cassette construction

## Water-Source Heat Pumps



### Axiom™ Standard Efficiency Model GEH/GEV

Horizontal (0.5 - 15T) or vertical (0.5 - 25T); Deluxe sound option for quiet operation; Multiple airflow configurations; 0.5 - 25 Tons



### Axiom High Efficiency Single-Stage Model EXH/EXV

Horizontal or vertical; Deluxe sound option for quiet operation; Electronically Commuted Motor (ECM); Rotary or scroll compressor; 0.75 - 6 Tons



### Axiom High Efficiency Two-Stage Model DXH/DXV

Horizontal or vertical; 2-Stage compressor; Deluxe sound option for quiet operation; Meets LEED EA4 requirement; 2 - 6 Tons



### Axiom Variable Speed Model VSH/VSV

Horizontal or vertical; eFlex™ Variable Speed compressors and fans; Single and three phase voltage; 2 - 5 Tons



### Axiom High Efficiency Console Model GEC

ASHRAE 62 indoor air quality compliant; Quiet operation; 0.5 - 1.5 Tons



### Axiom Vertical Stack Model GET

Multiple capacities & cabinet sizes; Available in PSC or ECM motors; Flexible air supply options; Integrated controls; 0.75 - 3 Tons



### Axiom Water-to-Water Model EXW

Co-axial heat exchanger; Rackable modular design; 5, 10, 20 Tons





**Axiom Rooftop Models GWS & GSJ**  
Boiler/Tower or Geothermal applications; Multiple configuration options; GWS (3-10 Tons); GSJ with Symbio 700 controls (12.5 - 25 Tons)

## Air Handling Units



**Performance Climate Changer® - Catalog**  
Dependable performance at an uncompromising value; Compact Footprint; Factory-Engineered, Mounted & Tested Controls; Indoor/Outdoor; Up to 15000 CFM; 2" R-13 Construction



**Performance Climate Changer® - Semi-custom (CSAA/PSCA)**  
Leading Efficiency and Casing Performance: Dimensional Flexibility enabling Easy Installation: Indoor/Outdoor; Up to 60000 CFM; up to +/-10 in w.g.; 2", R-13 or 3", R-19 Construction; Factory Engineered, Mounted & Tested Controls



**Performance Climate Changer - Custom (TCFS/TCPA)**  
Now available in side-by-side configurations; Indoor or outdoor; Unlimited dimensional flexibility and airflow; Up to +/- 12 in. w.g. operating pressure, with <1/2% air leakage rate; Absolute thermal barrier with performance up to R-25



**Trane Air Rotation Unit**  
Indoor or Outdoor; Up to 300 tons and 120,000+ CFM; CW or DX; 2" Foam Insulated panels, factory engineered & mounted controls

## Make-Up Air Gas Heating Units



**Model GSAA**  
Indoor Gas-Fired Make-Up Air Handlers; Standard & High Efficiency; 100 - 1200 MBH



**Model GRAA**  
Outdoor Gas-Fired Make-Up Air Handlers; 100 - 1200 MBH



**Model AHOA**  
Packaged Air Handlers; Cooling, Make-Up Air, & Ventilation

## Unit Heaters



**Gas Fired Unit Heaters**  
14 sizes, from 30 to 400 MBh; 409 stainless steel; Single point power; Direct Spark ignition; Tubular heat exchangers; OSHA fan guard



**Electric Unit Heaters Model UHWA/UHAA/UHRA/UHXA/UHEC/UHCA**  
7 styles, over 200 configurations; Sized from 1.5 to 50 kW; Capacities from 5 to 16.4 MBh; Vertical or horizontal discharge; Single point power; UL Listed



**Hydronic Unit Heaters Model UHS/UHP**  
38 unit sizes from 8 to 720 MBh; Vertical and horizontal configurations; 2-point or 4-point installation; Single point power: Steam or hot water; OSHA fan guard; ETL/ETLc certified

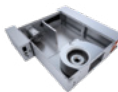


**High Efficiency Gas Fired Unit Heater Model HINA/HIPA**  
6 sizes: 50-400MBH, natural and LP gas. 3:1 self-modulating turndown; >95% Efficiency

## Terminal Units



**Blower Coil**  
Blower Coil Model BCXE; Indoor; Up to 4000 CFM; Horizontal and Vertical Configurations; ECM Motors, Multiple Filter Options, Factory-Engineered & Mounted Controls



**CoolSense® Terminal Unit**  
Up to 1300 CFM; Variable speed ECM; Symbio® 500 controller (available with Air-Fi wireless)



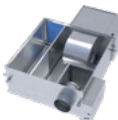
**VariTrane® Model VC\*F**  
Single Duct Variable Air Volume Boxes; 25 - 8000 CFM; Optional Factory Installed Piping Package



**VariTrane® Model VDDF**  
Dual Duct Variable Air Volume Boxes; 80 - 8000 CFM



**VariTrane® Model VP\*F**  
Parallel Configuration Fan-Powered Variable Air Volume Boxes; 200 - 2200 CFM



**VariTrane® Model VS\*G**  
Series Configuration Fan-Powered Variable Air Volume Boxes; 200 - 2500 CFM; optional integral suppressor attenuator available



**VariTrane® Model L\*\*F**  
Low Height Fan-Powered Variable Air Volume Boxes; 100 - 1800 CFM; Parallel or Series Configuration



**VariTrane® Model VRRF**  
Round Inlet/Round Outlet RetroFit Variable Air Volume Boxes; 25 - 4000 CFM



**UniTrane® Model FC\*B**  
Horizontal or Vertical Fan Coil; Cabinet, Recessed or Compact Configurations; 200 - 1200 CFM



**Force-Flo™ Model FF\*B**  
Horizontal or Vertical Cabinet Heater; Concealed or Recessed Configurations; 200 - 1200 CFM



**Model VUVE**  
Vertical Unit Ventilators; 750 - 1500 CFM



**Model HUVC**  
Horizontal Unit Ventilators; 750 - 2000 CFM

## Split Systems



**Split Systems**  
Cooling & Heat Pump; Gas, Electric, or Hot Water Heat; 1.5 - 5 Tons



**Odyssey™**  
Symbio® 700 controller; Full & part load efficiencies; Up to 14.8 IEER; 6 - 25 Tons



**RAU**  
Air-Cooled Condensing Units; Available with Remote Chiller Evaporators; 20 - 120 Tons



**CAUJ**  
Air-Cooled Condensers; 20 - 120 Tons

## Outdoor Air Solutions



**Horizon® DOAS (OAXX)**  
DOAS; Packaged product (DX, Air and Water Cooled); Heat Pump, Gas, and Hot Water; >43°F Dew Point capability; ERV; AHRI 920 rated; 3-80 Tons



**Horizon® Flex™ (HAXX)**  
Up to 100% outdoor air; Packaged product (DX - Gas Heating); >51°F Dew Point capability; ERV; AHRI 340/360 certified; ASHRAE 90.1 compliant; 10 - 15 Tons

## VFD



**TR150/TR200**  
Trane Variable Frequency Drives; 6, 12, 18 Pulse



Trane – by Trane Technologies (NYSE: TT), a global climate innovator – creates comfortable, energy efficient indoor environments through a broad portfolio of heating, ventilating and air conditioning systems and controls, services, parts and supply. For more information, please visit [trane.com](http://trane.com) or [tranetechnologies.com](http://tranetechnologies.com).

All trademarks referenced in this document are the trademarks of their respective owners.

© 2024 Trane. All Rights Reserved.

EDU-SLB048-EN  
09/06/2024